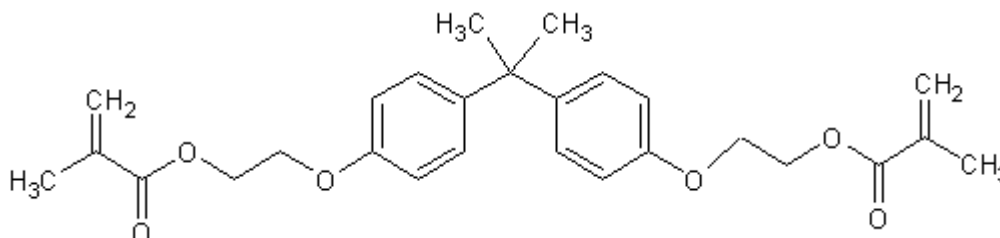


Item # X-970-0000, Ethoxylated Bisphenol A Dimethacrylate



Product Name: Ethoxylated Bis Phenol A Dimethacrylate

CAS#: 41637-38-1

This form of EBPADMA has 2 to 4 units of ethoxylation and is sometimes referred to as bis-EMA or Isopropylidenediphenol PEG-2 Dimethacrylate. It is often used in blends with triethyleneglycol dimethacrylate and bisGMA. This material has low levels of water sorption and a high polymerization rate. Sometimes referred to as Isopropylidenediphenol PEG-2 Dimethacrylate, this product has also been used in anaerobic adhesive applications.

TYPICAL PROPERTIES

Molecular Formula	C ₂₉ H ₃₆ O ₇
Molecular Weight	496.582
Refractive Index	1.535
Viscosity @ 25°C (cps)	500 - 1050
Color (APHA)	<120
Inhibitor	MeHQ – 250-350 ppm
Toxic Substance Control Act List	Listed
Specific Gravity	1.121 g/mL